



Installation Guide

SMART SWITCH

Touch Works

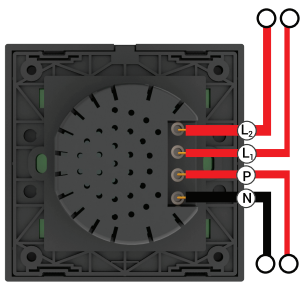
- > Identify three types of wire (Line, Neutral & several Loads)
- > Switch off the main power/ Circuit Breaker/ Fuse



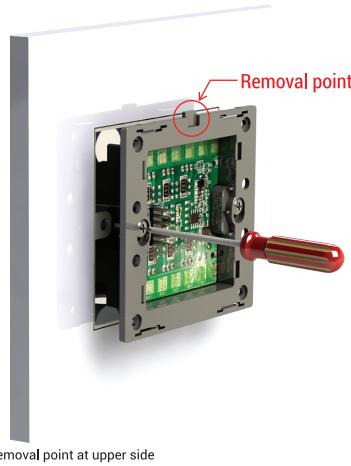
- > Twist to remove touch panel from base with small screwdriver



- > Wiring line, neutral and load according to base marking



- > Mount the base of smart switch board into the wall with 86 type screw cassette



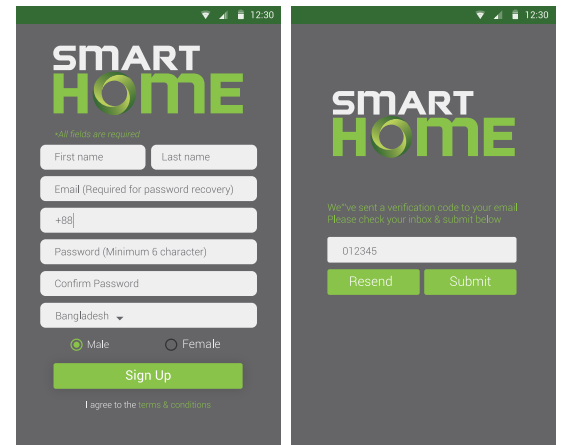
- > Match the lower corner part of the base with touch panel.



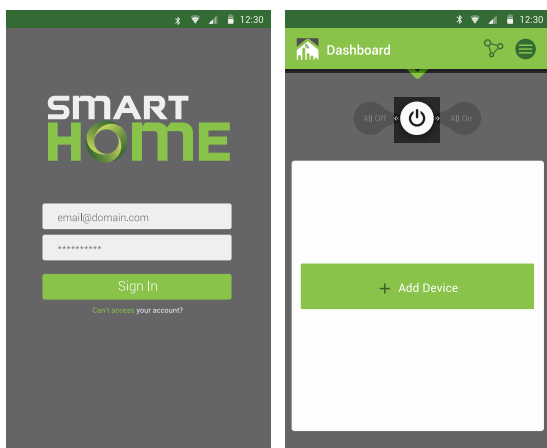
- > Place the touch panel over the base & slightly push it



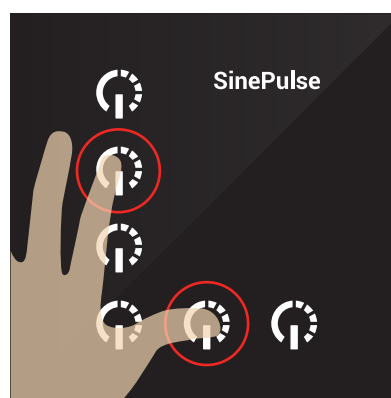
- > Enable internet connection, download Smart Home app and Sign Up
- > A verification code will be sent in your provided email address, enter the code and submit



- > Turn on Bluetooth and Sign in with your provided email address and password

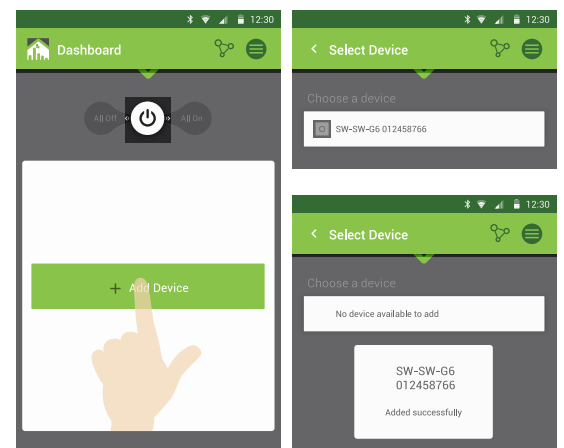




- > Before adding device, tap and hold switch 2 & 5 at a time for 2 seconds from installed smart switch to start broadcasting mode

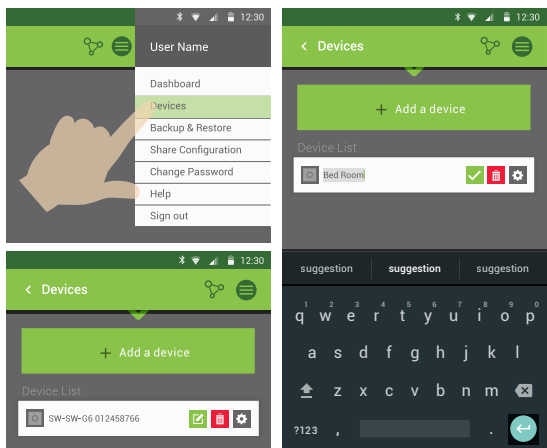


- * Switch indicator would be blinked sequentially to confirm broadcasting mode


- > Once broadcasting mode is on, tap 'Add a device' to add switch board from searched list.

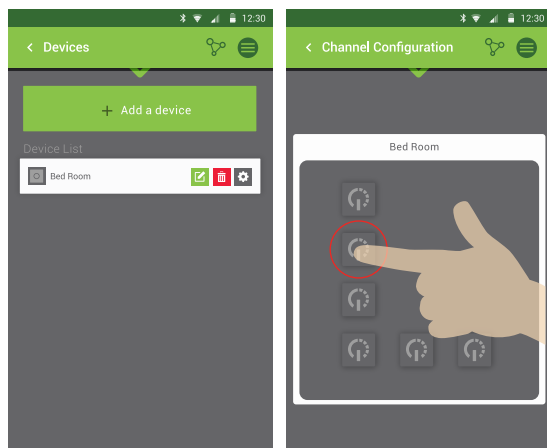


> Go to 'Menu' , select Devices and tap 'Edit'  to rename added device



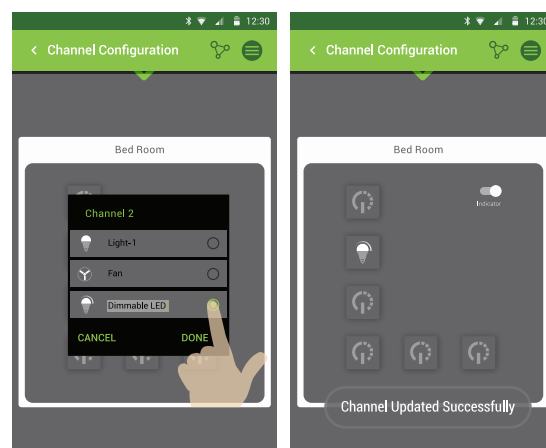
13

> Tap 'Setting' , select any channel to configure/assign load



14

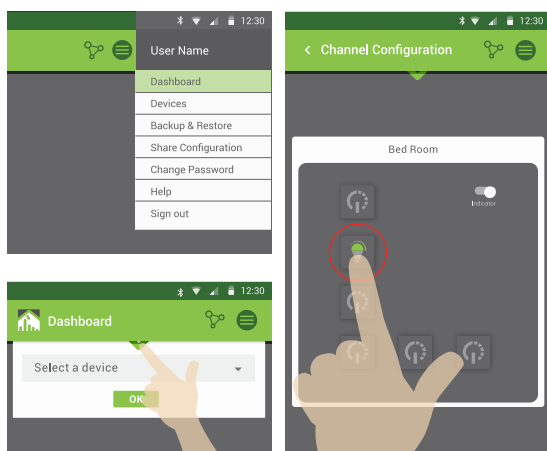
> Rename load, select type of load and tap 'Done' button to configure load



• Type of loads are Energy Light, Fan and Dimmable Light at V 1.0
• Other channel can be configured with different load in the same way

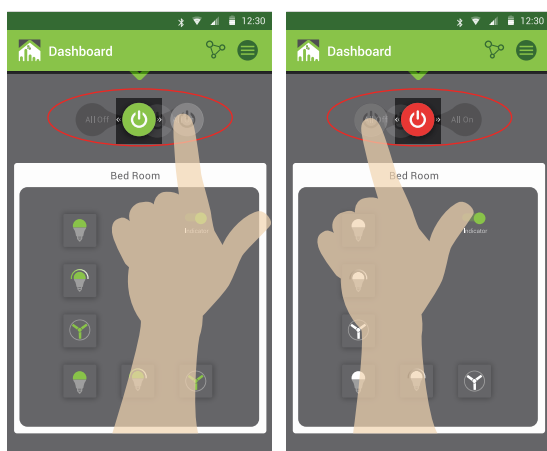
15

> To control load, go to dashboard from Menu, select the configured load to turn On/Off



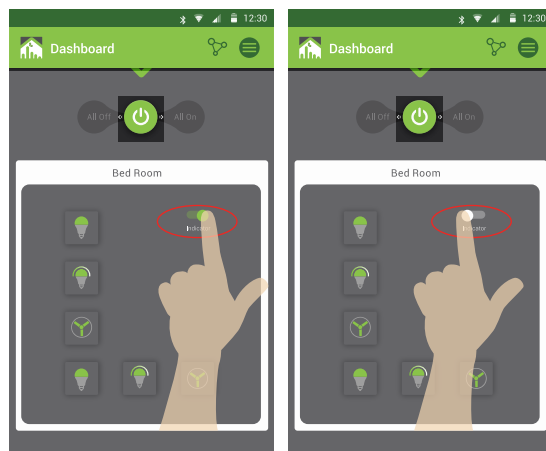
16

> Swipe "Global On/Off" button to control all the configured load at a time



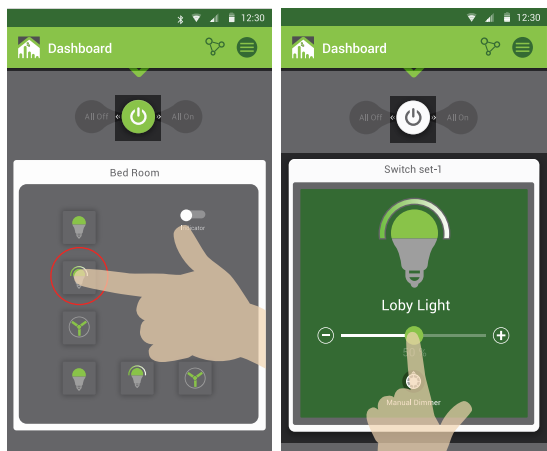
17

> Tap 'Indicator' button to turn On/Off the indicator of switch board



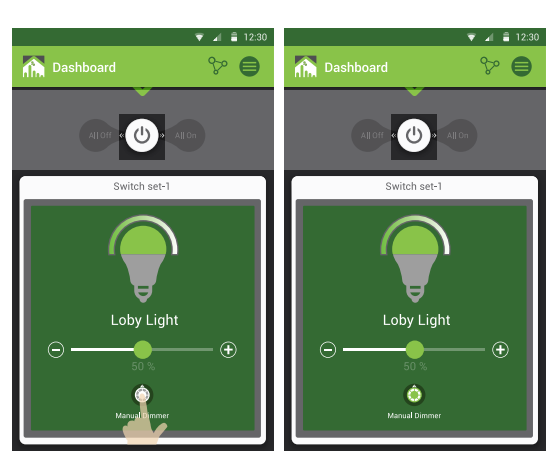
18

> Double tap configured/assigned load from dashboard and swipe dimming bar to manage light intensity



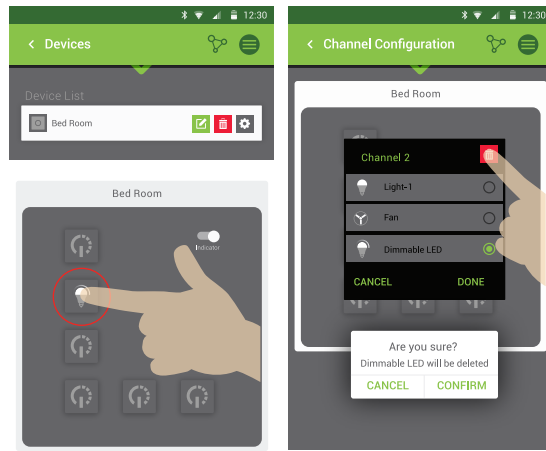
19

> To turn on dimming option from smart switch tap on Manual Dimmer Now tap and hold any dimmable load channel in smart switch to control speed / intensity



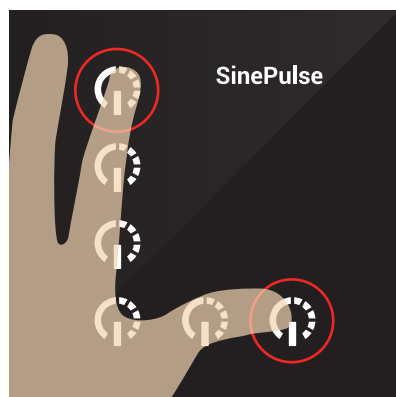
20

> To delete any load, go to setting and select an assigned load, then tap delete icon and confirm



21

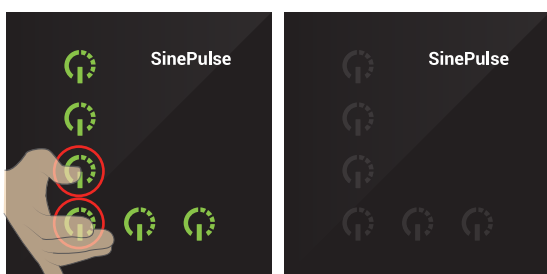
> To delete/deassociate device from app, tap and hold switch 1 & 6 at a time for 2 seconds from smart switch



• Switch indicator would be blinked sequentially to confirm deletion/deassociation

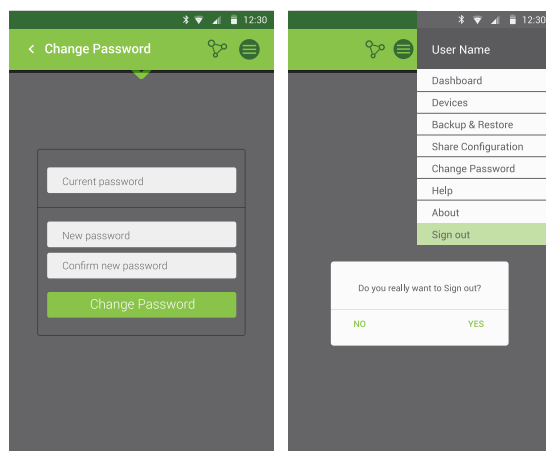
22

> Tap and hold switch 3 & 4 at a time for 2 seconds to turn On/Off the indicator of switch board



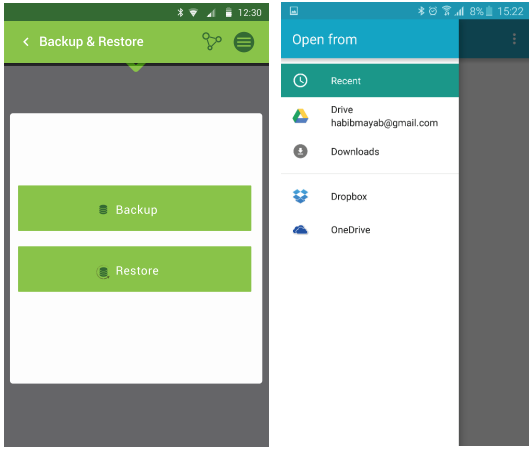
23

> Password change and sign out from Smart Home app



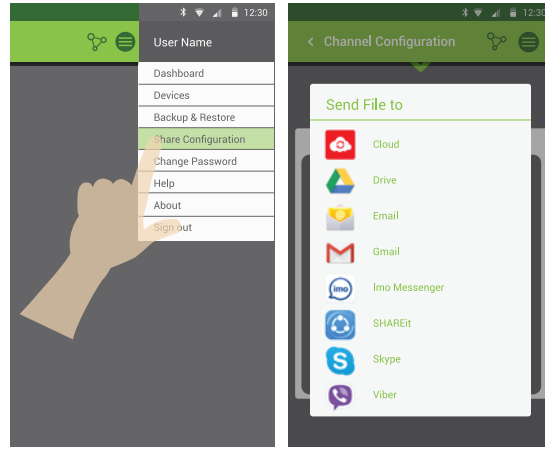
24

- > Go to 'Backup & Restore, select backup to save configuration and restore when needed



25

- > Select 'Share Configuration' from Menu to provide access to others* on Smart Home app



*Others need to restore shared configuration to control device

26